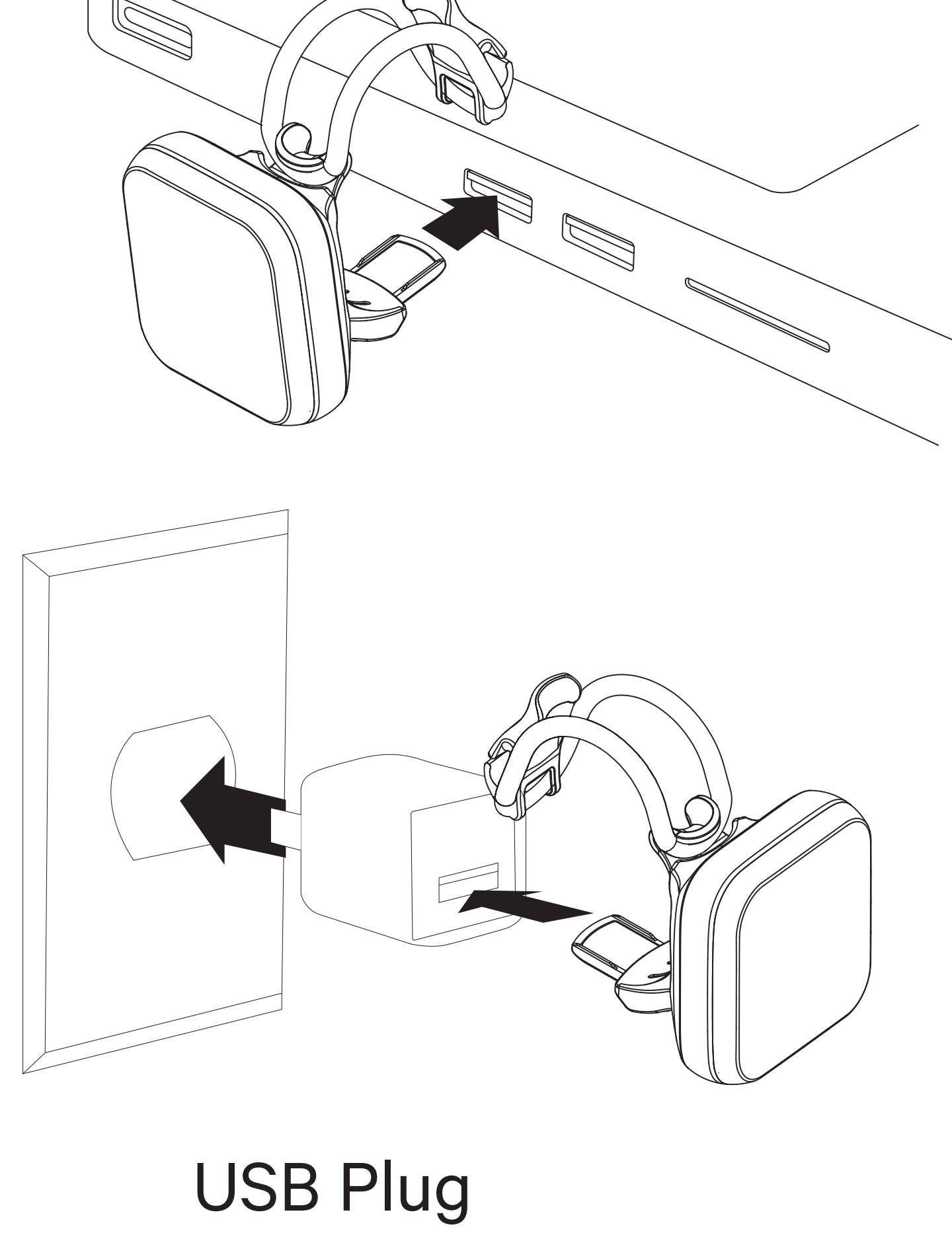




# BLINDER

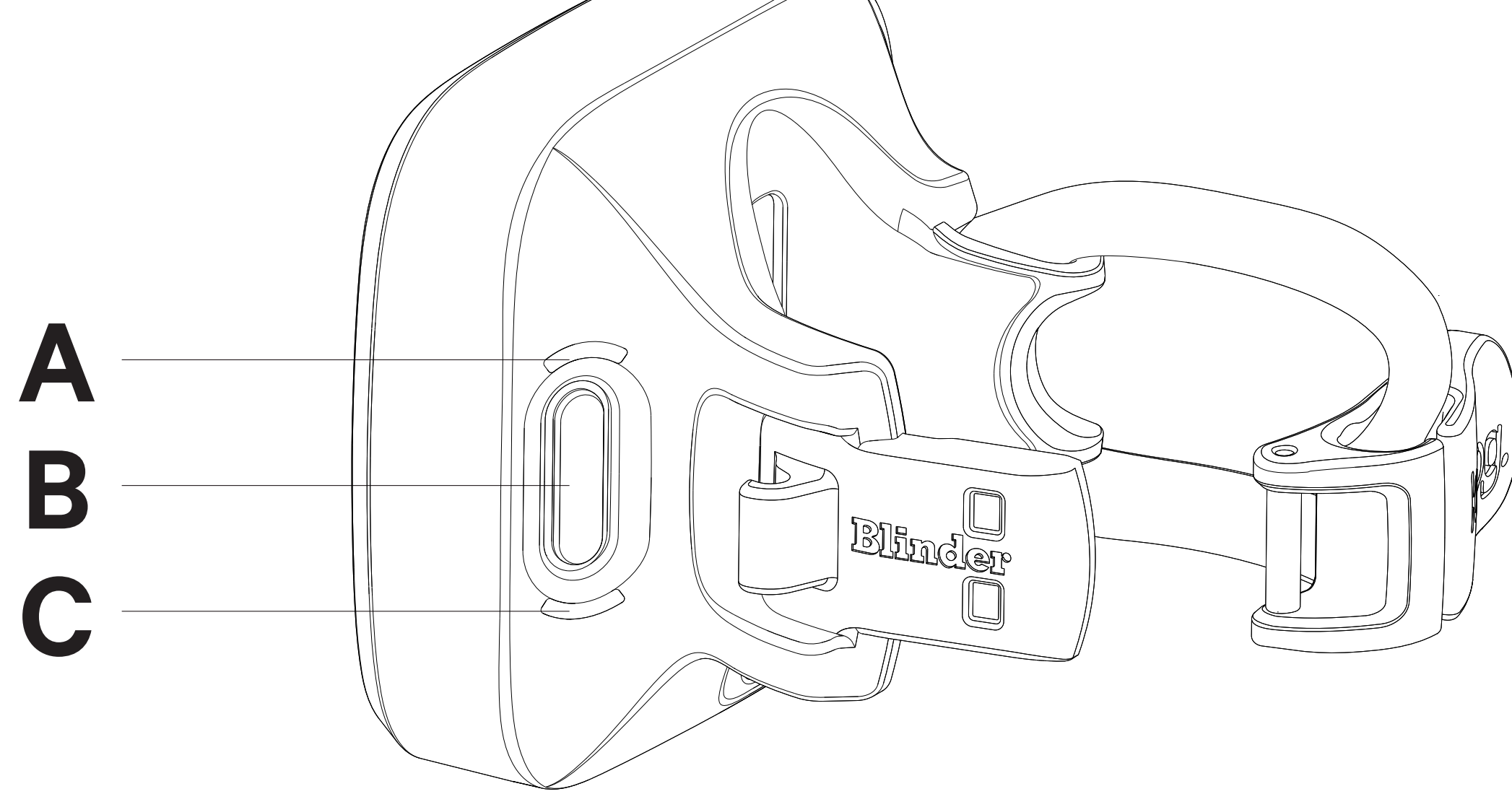
## QUICK START GUIDE

### RECHARGE BEFORE FIRST USE



USB Plug

### INTERFACE



- A. LOW BATTERY INDICATOR
- B. POWER/MODE SWITCH
- C. RECHARGE INDICATOR

LONG PRESS B TO TURN LIGHT ON/OFF

SHORT PRESS B TO CYCLE MODES

### FITMENT

#### 3 STRAP SIZES INCLUDED



BLINDERS COME PRE-FITTED TO CLASP WITH MEDIUM STRAP

### INTERCHANGEABLE STRAP



Stretch strap to fit clasp

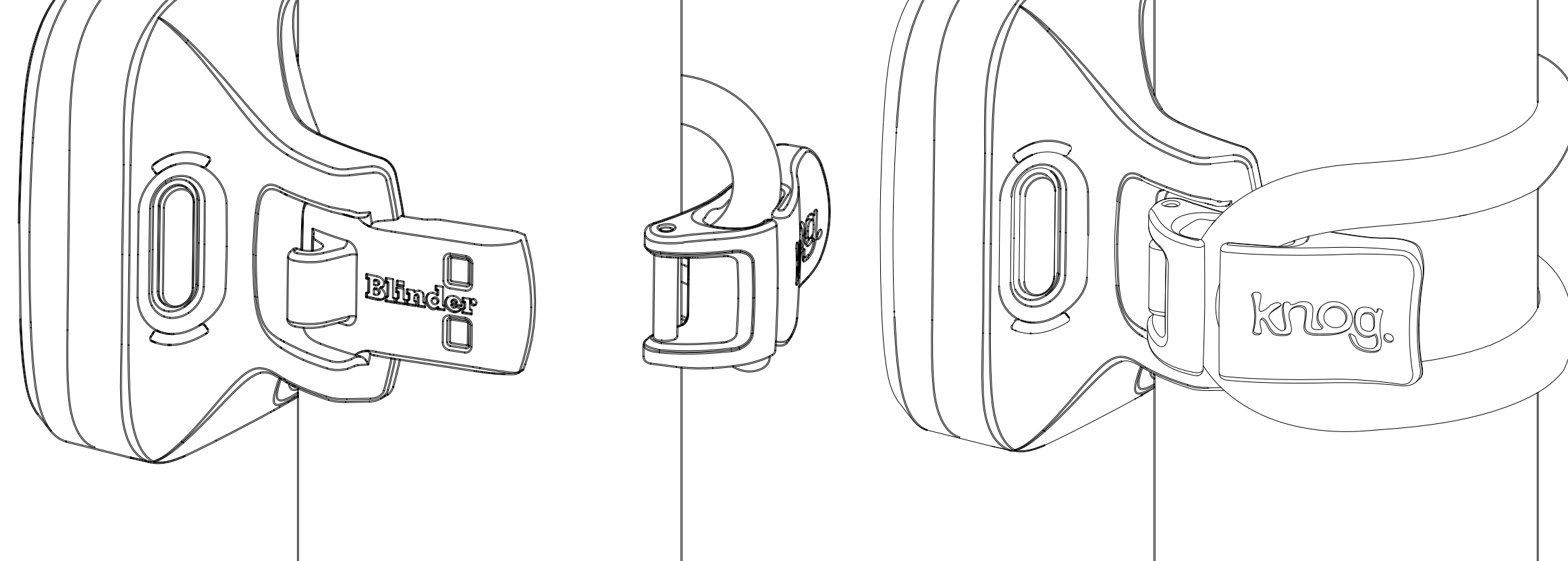


Place strap end over hook



Pull strap toward the light body

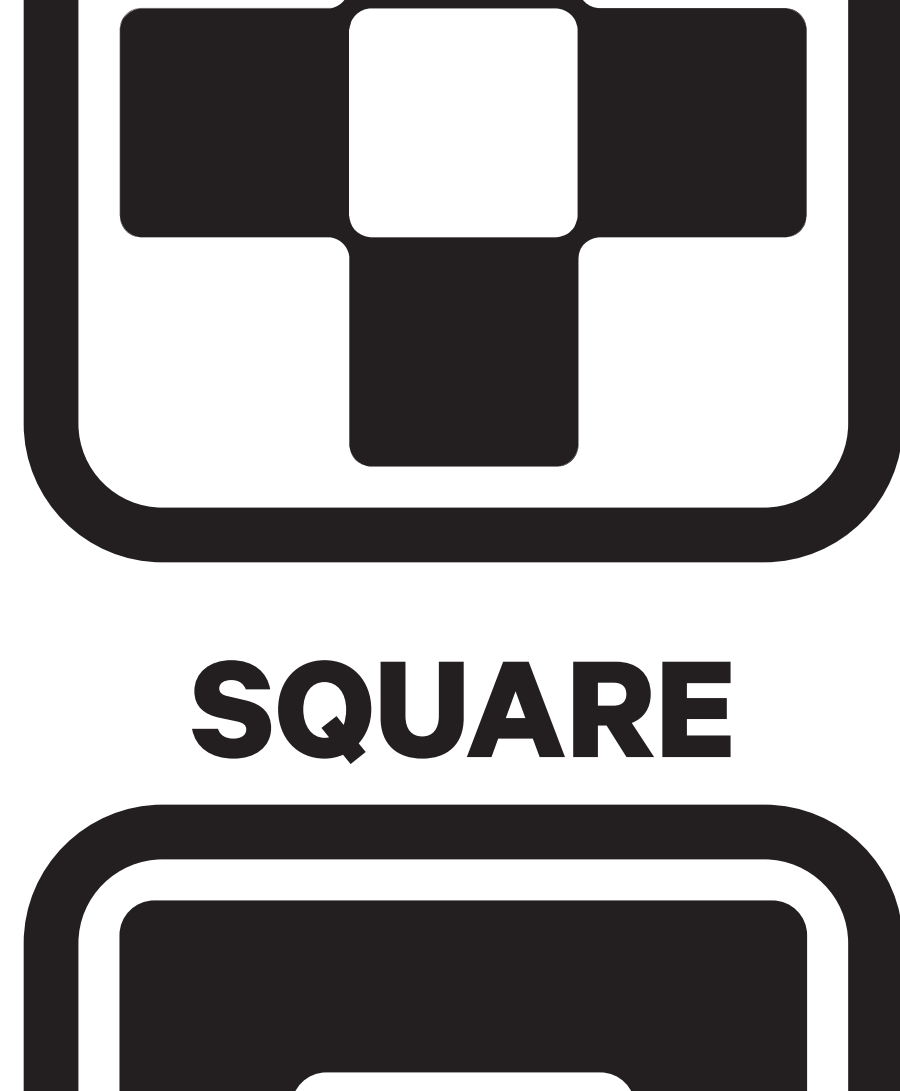
### MOUNTING



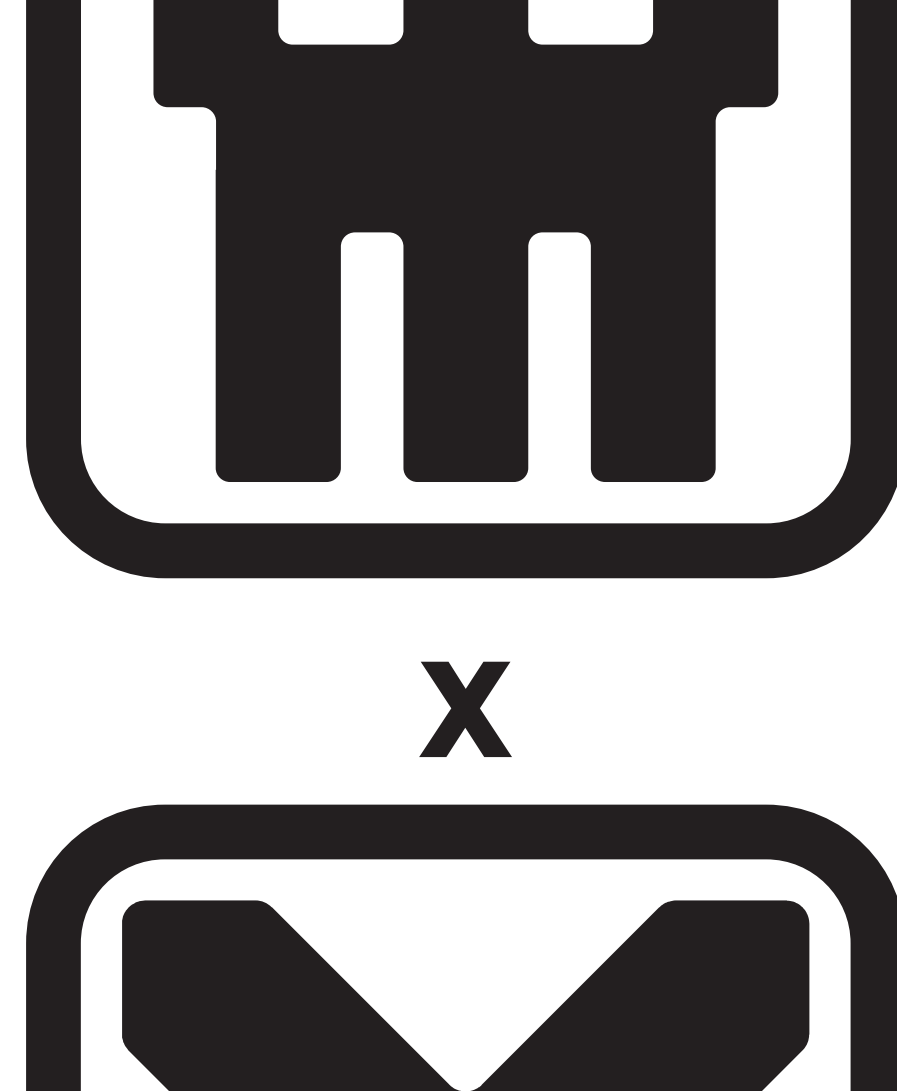
1. Pull silicone strap around bar
2. Engage latch into hook

### THE RANGE

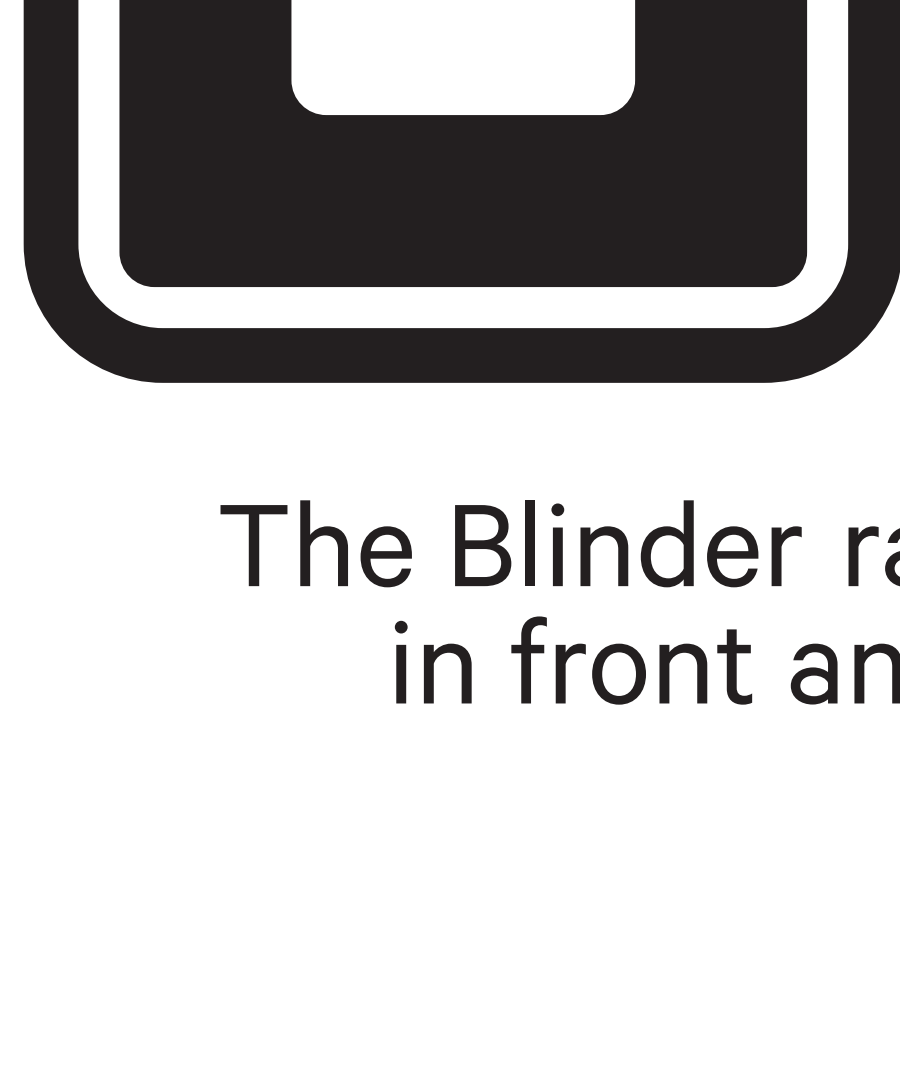
GRID



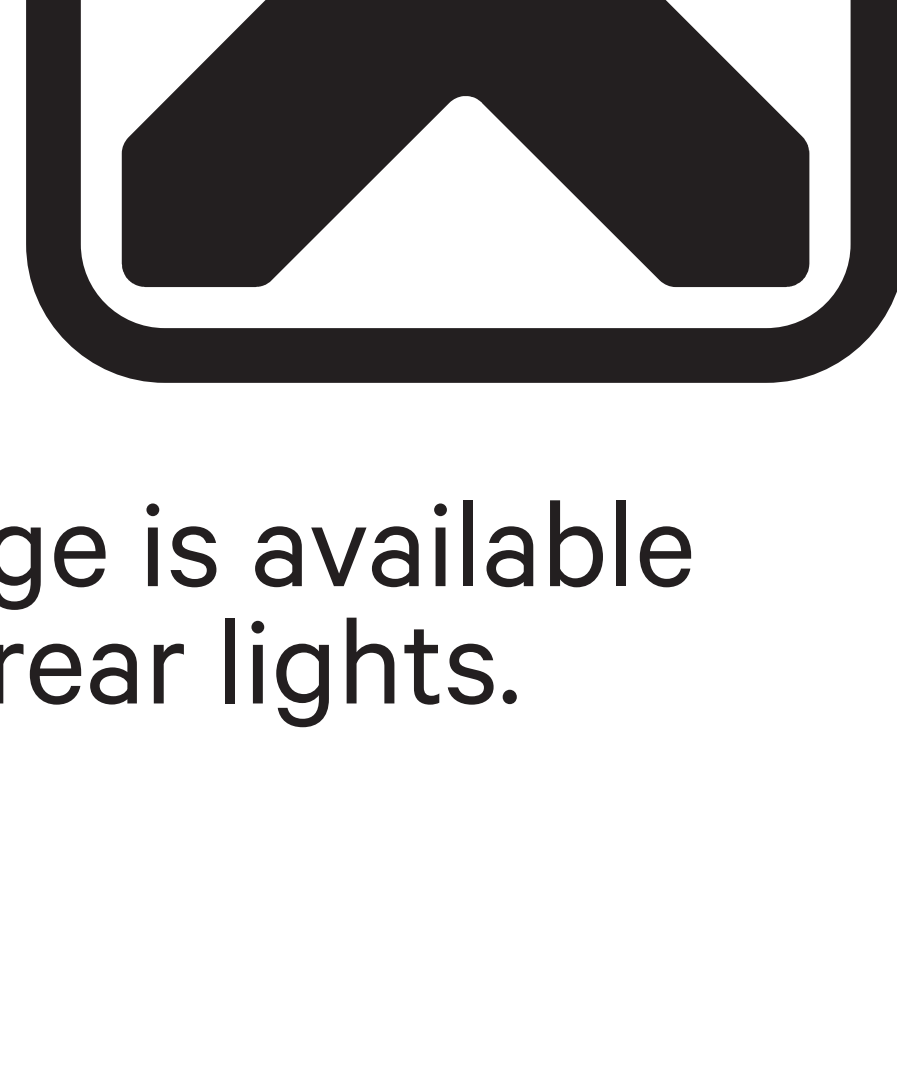
SKULL



SQUARE



X



The Blinder range is available in front and rear lights.

### WARRANTY INFORMATION

This light is guaranteed for 2 years against manufacturing defects only.

The battery is guaranteed for 6 months against manufacturing defects only. See the website for more details.

For more information go to [KNOG.COM](http://KNOG.COM)